

# 2020

## ANNUAL REPORT



## A letter from our CEO and Board Chair



**Mark A. Wilson**

President, CEO/Co-Founder,  
Coalition for Responsible  
Community Development

Since 2005, the Coalition for Responsible Community Development (CRCD) has been devoted to inspiring, educating and empowering the historically disadvantaged youth and residents of South LA.

Our 2020 Annual Report “15 Years of Reviving and Thriving” celebrates CRCD’s longstanding commitment to revitalizing historic buildings, reinvigorating South LA neighborhoods, and providing the resources residents need to succeed. Despite the COVID-19 shutdowns and unprecedented challenges clouding 2020, we continued to work, grow, and serve our community.

Not only did we stay open and accessible, we were able to expand our services, add program sites, acquire new properties and strengthen our outreach efforts. All of these achievements will allow CRCD to further lean into its mission of increasing access to education, jobs, and stable housing.

We extend our sincerest gratitude to our youth, funders, strategic partners, community leaders, nonprofits and other advocates without whom these triumphs wouldn’t be possible. Thanks to their support, we didn’t just survive – we thrived.

Here’s to the next 15 years!



**Antonio Manning**

Board President,  
Coalition for Responsible  
Community Development



## CRCD Board of Directors

Antonio Manning – Board Chair  
President & CEO  
Affordable Living for the Aging

Bryan Wilson – Board Treasurer  
Senior Sales Executive  
Reyes Coca-Cola Bottling Company

The Honorable David Herriford –  
Board Member  
Judge of the  
Los Angeles County Superior Court

Ron Mitnick – Board Member  
Director  
Construction Real Estate Risk at  
Citi Community Capital, Citibank

Ricardo G. Mendoza –  
Board Member  
Vice President  
Lee Andrews Group

Bruce Saito – Board Member  
Director  
California Conservation Corps

Mark A. Wilson –  
Board Member President  
CEO/Co-Founder  
Coalition for Responsible  
Community Development



# Meeting needs, exceeding expectations

2020 was a year full of challenges and possibilities. As we navigated the challenging times and pandemic closures, we realized that it was more important than ever to do everything we can to protect the health and wellness of our community, especially our most vulnerable Angelenos who were not in a position to hunker down at home. Our offices remained open and as possibilities presented themselves, we thrived. We were able to expand our services and open new locations to better serve the community.



## A few of our highlights in 2020 include:

- CRCD opened a satellite office at Pueblo Del Rio to provide workforce and youth development services to the residents in the 660 units of low-income housing.
- CRCD service departments supported the Los Angeles Mayor's Office and the City of Los Angeles in distributing Angeleno Cards to South LA residents. In just one month, we distributed 1,349 Angeleno Cards totaling \$1,288,210 to area residents financially affected by COVID-19.
- CRCD was designated as an EnVision Center by the U.S. Department of Housing and Urban Development (HUD). The center is the first of its kind to open in the City of Los Angeles and will enhance CRCD's full spectrum of services addressing youth and workforce development, education, housing instability, and impacts of historic disinvestment in the community. As an EnVision Center, we will expand our capacity to serve the South Los Angeles community by growing our existing partnerships to include connections to federal agencies to bring new resources to the community.
- CRCD opened Residences on Main, a new affordable and permanent supportive housing development to replace the community blight that once stood on the corner 69th and Main Street in South Los Angeles. Residences on Main has provided new homes to 50 formerly homeless transition age youth and families and offers onsite services for youth and adults.
- CRCD purchased the Historic Lincoln Theater on South Central Avenue with plans to renovate the building to its former glory and build affordable and permanent supportive housing on the adjacent lot.

We also celebrated our 15-Year anniversary! Here is a look at how we have grown and thrived over the past 15 years as we continue to serve our community while changing lives, and building neighborhoods responsibly.

## TABLE OF CONTENTS:

CRCD 15 Year Timeline.....	Pages 4-7
Youth Development Department.....	Pages 8-9
Workforce and Economic Development Department.....	Pages 10-11
Housing and Support Services Department.....	Pages 12-13

Real Estate Development.....	Pages 14-15
CRCD Enterprises.....	Page 16
Testimonials.....	Pages 17
Financials.....	Pages 18
Funders & Supporters.....	Page 19
Program Locations.....	Page 20

# Progress with Purpose - CRCD Timeline



CRCD began with one contract in 2005 — to provide graffiti abatement services for the City of Los Angeles - and has grown to one of the leading African American led community development corporations in Los Angeles

Over the past 15 years, CRCD has thrived to include four departments: Youth Development, Workforce & Economic Development, Housing & Support Services, and Real Estate, offering a full spectrum of whole person care services to the community we serve.

2005



CRCD established the Central Avenue Business Association (CABA) with a contract from the Community Redevelopment Agency to bring support to the small businesses in the area.

CRCD received our first collaborative grant from Pfaffinger Foundation to fund the Vernon Central Workforce Development Network.

2008



CRCD is committed to shining a spotlight on the need to build housing for homeless youth, and implement programs and resources that improve the lives of young adults facing multiple barriers to stability in South LA.

In 2007, we partnered with Little Tokyo Service Center (LTSC) to begin developing permanent supportive housing with on-site case management services for transition-age youth and affordable housing for low-income residents.

2007



CRCD created the Support Services Department to better help homeless young people ages 18-24, many of whom may be transitioning out of the foster care system, to find housing and reach stability for a better future.

CRCD opened the first 100% permanent supportive housing building for transition-age youth in South Los Angeles. The 36th Street Apartments was made possible by the support and partnership of the Little Tokyo Service Center.

2009

2011

2012



CRCD received our first Department of Labor YouthBuild award to create the South LA YouthBuild and solidified their partnership with Los Angeles Trade-Technical College to provide education and training services to South LA youth.

CRCD created the CRCD Academy where young people ages 16-24 can complete their education and receive an accredited high school diploma. The first year, CRCD graduated 11 young people from CRCD Academy, since then, more than 692 have received certifications, job skill training and a high school diploma!



CRCD launched a social enterprise, CRCD Enterprises, to serve as a job-creation engine in Los Angeles. The Enterprise employs young people who have gone through intensive education, training, and career-building programs. In 2012, CRCD Enterprises became a State of California licensed general contractor offering excellent services in the fields of general construction, facilities maintenance, and urban infrastructure.

CRCD began offering youth development services by serving as a YouthSource Center sub-contractor to the Archdiocese Youth Employment Services (AYE).

# CRCD Timeline - Continued



CRCD, in partnership with All People's Community Center and Los Angeles Trade-Technical College, established the Vernon Central Network to provide area youth with case management, work readiness and leadership development programming.

CRCD opened Ruth's Place, the only drop-in center for homeless youth ages 18-24 in South Los Angeles, which was contracted as a "Day Shelter" with the Los Angeles Homeless Services Authority.

2013



CRCD received a generous grant from the Conrad Hilton Foundation to launch Project Tipping Point. Operated in partnership with LATTC, the program is designed to support college retention and completion for foster youth.

CRCD was awarded a Financial Opportunity Center from LISC to provide career and financial coaching services to WorkSource Center program participants.

CRCD is recognized by the US Department of Housing and Urban Development as a key partner in SLATE-Z where the organization participates on the Steering Committee co-chairs, Public Safety, and Foster Youth committees.

2016

2015



CRCD received the City of Los Angeles Economic Workforce and Economic Development contract to host a WorkSource Center. The Vernon-Central/LATTC WorkSource Center provides individuals 18 and over with wrap-around employment, training, and financial coaching services.

CRCD has partnered with the Council District 9 office every year since 2005 to co-host the Central Avenue Jazz Festival. 2015 marked the 20th Anniversary of the festival with over 10,000 guests filling the streets of the Vernon-Central neighborhood. CRCD youth are often employed to make sure the festival is a fun and safe experience for the community.



CRCD created the South Los Angeles Entrepreneurship Program to assist new and existing small business owners by providing a series of workshops designed to deliver information, knowledge, and skills necessary to start or expand a business.

The formation of the Central Avenue Business Association paved the way for CRCD to create the Historic Central Avenue Business Improvement District to get more resources to the local area small businesses.

2018

2019

2020



CRCD created the Workforce and Economic Development Department and Housing and Support Services Departments to highlight the expanded services offered under those departments. Each department offers an array of programs to support our commitment to whole person care.

With the renovation of the Dunbar Hotel, CRCD Economic Development services were able to shepherd the placement of Delicious at the Dunbar, the first full-service restaurant on Central Avenue in decades.



CRCD opened a satellite office at Pueblo Del Rio, bringing workforce and youth development services to the community.

CRCD purchased the Historic Lincoln Theater with plans to renovate the building to its former glory and build affordable and permanent supportive housing on the adjacent lot.

CRCD was named an EnVision Center by the United States Housing and Urban Development. This designation has enhanced our broad spectrum of services to support economic and financial stability, educational advancement, food security, and young leader development in South Los Angeles.



# Youth Development



## Guiding positive growth

CRCD is uniquely qualified to serve disconnected and transition-age youth, ages 14-24, who are out of work and out of school, and who face challenges that traditional institutions cannot accommodate. We provide comprehensive youth development services with a focus on education, workforce development, career pathways, and alternative sentencing. At CRCD, we intentionally serve out-of-school, out-of-work youth, and other vulnerable populations with barriers to employment.

CRCD operates numerous high-quality education and workforce development programs for youth including Jobs for Los Angeles Graduates, South Los Angeles YouthBuild, AmeriCorps, Community Uniting for Resolution and Empowerment (C.U.R.E), Project Tipping Point, and the Vernon-Central Network YouthSource Center, all of which are a part of local and national institutions funded by the City of Los Angeles, Department of Labor, YouthBuild USA, AmeriCorps, Jobs for America's Graduates, and private philanthropy. 100% of the youth CRCD serves through these programs qualify as disconnected youth.

## Our comprehensive trauma-informed care approach to serving young people includes:

1. Assessing and addressing the barriers that prevent young people from excelling in education and employment
2. Focusing on the longstanding neighborhood conditions where our young people reside – such as poverty, unemployment, public safety issues, and the lack of affordable housing
3. Engaging in collaborations that improve the policies and systems impacting a young person's life, such as education, justice, and foster care



The CRCD Youth Development Department offers an array of programs that ensure youth and young adults are prepared to enter the community as educated, skilled, and ready to thrive.

The CRCD Academy is an accredited high school in partnership with YouthBuild Charter School of California and enrolls students ages 16-24 seeking a high school diploma. Students are part of the South LA YouthBuild and AmeriCorps programs and are involved in community service, leadership development, and career exploration. Graduates receive their high school diploma and earn an industry-recognized credential from Los Angeles Trade-Technical College and/or CRCD Enterprises.



## Young people enrolled in the City of Los Angeles Summer Youth Employment Programs and Workforce Innovation and Opportunity Act programs at CRCD earned \$416,904 in 2020.

CRCD serves as lead agency for the VCN YouthSource Center – the first of its kind in Vernon-Central. The Center is a partnership of CRCD, Los Angeles Trade-Technical College, LA Conservation Corps, and All Peoples Community Center to connect young people to education, leadership & community service, career path training, and jobs. We provide intensive case management, support services, placement, and follow-up.



### YOUTH DEVELOPMENT DEPARTMENT 2015-2020



Total  
Served

4368



Total HSD/  
Credential Attained

963



Total Education/  
Credential Attained

2782



I learned to be committed myself, never give up. Focus on what's in front of you and follow through on what you start. I am very grateful for the lessons and the road CRCD has shown me how to pave for myself. I hope many more successes are to come from the work you all put into the youth at CRCD. Thank you for everything!

— Lamont

I truly appreciate the fact that they helped me graduate and achieve my high school diploma. In addition, sleeping on the floors and bouncing around from place to place was very hard and it is difficult to stay focused when you don't know where you are going to lay your head.

— Jennail



# Workforce & Economic Development



## Connecting community with opportunity

The Workforce & Economic Development Department at CRCD connects Veterans, dislocated workers, and the re-entry population with full-service employment, training, and financial coaching services. Our goal is to facilitate employment pathways to family-sustaining wages by removing barriers to job training and placement. We do this through 1-on-1 career coaching, personalized industry training, workforce readiness, financial coaching, and support services to remove barriers to employment.

As the lead agency operating the Vernon-Central/LATTC WorkSource Center, we are a proud partner of America's Job Center of California addressing the obstacles and needs of the re-entry population by employing a trauma-informed approach to individuals re-entering society. The Vernon-Central/LATTC WorkSource Center provides workforce training and placement in jobs that allow people to give back to the community while providing a family sustaining wage.

The economic impact of the pandemic was felt more severely in low-income and communities of color. To provide a bit of relief in 2020, the Workforce and Economic Development at CRCD was chosen as hub to distribute Angeleno Cards to South LA residents financially affected by COVID-19. Our team distributed 1,349 Angeleno Cards totaling \$1,288,210 to area residents.

"Being able to have a support system was very important. I would have never taken the initiative to go through the OSHA training, nor did I think about going into construction to get a good job," he said. "I was lost until someone decided to take a chance on me and ask me questions about what I wanted to do and not what I should do."

— Eduardo



The CRCD-operated Financial Opportunity Center helps individuals reach their goals and secure financial sustainability. During the 1-on-1 sessions with a Financial Coach, clients are given the opportunity to focus on the issues that are holding them back from achieving their financial goals including credit, money management, and budgeting. The Bridges to Career Opportunities program provides educational and tutoring support to individuals who want to enter high-wage employment opportunities or may need additional support to pursue certifications to meet the requirements of the employer.

Working with our re-entry population, the Prison to Employment program provides resources for direct services, supportive services, and earn/learn opportunities to the formerly incarcerated and justice-involved individuals. Through this program, CRCD provides training, education, and career opportunities to individuals who are/or have been justice-involved.

Our Workforce and Economic Development department works with program participants to provide skills assessments, training, and employment pathways, as well as financial coaching through the Financial Opportunity Center.



CRCD is committed to addressing the obstacles and needs of the re-entry population by employing a trauma-informed approach as individuals adjust to societal demands. The Vernon-Central/LATTC WorkSource Center provides workforce training and placement in jobs that allow people to give back to the community while providing a family sustaining wage.

## WORKFORCE & DEVELOPMENT DEPARTMENT 2015-2020



Total  
Served

5630



Low Income  
& Re-entry

4633



Placed  
in Training

594

After serving 24 years in prison, Brian was released in 2019 at the age of 60. With the help of CRCD, GRID Alternatives, and Friends Outside, he shifted his focus to training for a career path in solar power installation and welding certification classes. Brian claims that the resources provided by these organizations are "wonderful and life-changing." Brian was recently hired by Tesla to put his new skills to work.

"Have faith in God and each other. Things happen and it is not always going to be easy but, do not give up! It will get better as long as you stay the course!" He added, "Ask for help. If you don't ask, no one knows!"



# Housing & Support Services Department



## Creating safe spaces

While we may not have been able to see many of our program participants in person, we remained open during the pandemic to provide service to our most vulnerable. This was especially important in our Housing and Support Services Department, where we focus on helping young people, ages 18-24, obtain safe and stable housing. CRCD provides on-site support services at six of our permanent supportive housing developments in South LA that house individuals who have experienced homelessness.

CRCD serves as the lead youth agency in its area of South LA in the countywide Coordinated Entry System (CES) for Youth, which aims to address the homeless epidemic in Los Angeles. We are responsible for strengthening collaboration among project partners; this includes access to initial assessment, regional case conferencing, housing navigation, and priority matching to housing resources that best fit each individual's needs.



"I was struggling with a stable home but seeing my friend in a similar situation motivated me to act on calling CRCD. The services here have impacted me in a powerful, positive way. I have learned that there is help out here if you look. What I like the most is the love. My biggest accomplishment has been getting my apartment! Now I'm excited when I visualize my success."

— B. Hightower

"I found CRCD through Home at Last. The fact that the CRCD program was going to help me in a major fashion was exciting. I have been impacted by the services at CRCD in a good way. The CRCD team has been by my side every step of the way. I like how they are invested in helping their clients. I am very thankful that the CRCD team helped me with my housing situation."

— Brandon



Our Rapid Rehousing program assists young people experiencing homelessness or at risk of becoming homeless in Los Angeles County by providing linkage to available housing and services to prevent displacement. Many of the young people we serve include youth who are couch surfing, exiting the foster care system, or on probation.

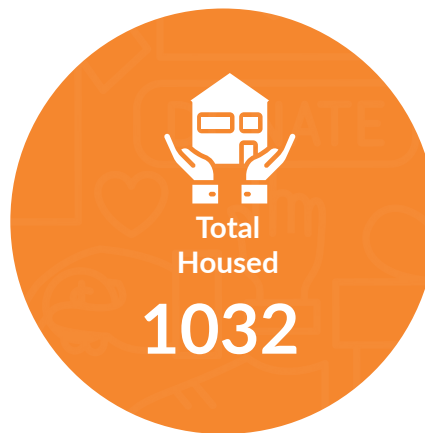
To better serve young people experiencing homelessness, CRCD operates Ruth's Place, a drop-in center for youth who would otherwise be on the streets. Ruth's Place provides clothing, food, showers, transportation support, and access to support services and referrals.



In 2020, visitors to Ruth's Place were provided with nearly 1,500 food items, in addition to clothing, PPE and ongoing support services.



## HOUSING & SUPPORT SERVICES 2015-2020



"To think that I started with nowhere to go. I was sleeping in my car at night and going to work during the day. It was an extremely hard experience. Once I got tired of it, I started to call around for places that might be able to help me get into my own place. Once I got to Ruth's Place, I heard about the rehousing program and was excited right away. It sounded like it was exactly what I needed to get on my feet.

Fast forward a few weeks, and now I'm in my own apartment that CRCD helped me get in. Because of them, I didn't have to pay my deposit or first month's rent. I appreciate my case manager for really putting forth effort to help me. Now I can save for a couple months, get myself established and be ahead so I won't ever be in that predicament again. I just want to say thank you CRCD!"

— Koriece



## Real Estate Department



### Building a better tomorrow

At CRCD, we develop award-winning affordable housing and permanent supportive housing for low-income residents and transitional-age youth experiencing homelessness. To date, we have provided 370 units of affordable and permanent supportive housing totaling an investment of over \$125 million in our South Los Angeles community. **We have nearly 1,000 new units in development** with a quarter of those set aside specifically for transition-age youth and young families.

CRCD is focused on building housing for homeless youth ages 18-24. One in three foster youth experience homelessness within two years of exiting the foster care system, when they are no longer eligible to receive assistance from previous sources.

In 2020, CRCD joined forces with LA Family Housing to open Residences on Main at 6901 S. Main Street in South Los Angeles. We cleared a corner in South LA that had been condemned by the City in 2010 as a nuisance and have created a new facility to provide housing for our most vulnerable that are currently experiencing homelessness.



### Residences on Main – HHH Funding \$10,780,000

As a leading partner in developing economic opportunity in South LA's Promise Zone (dubbed the South Los Angeles Transit Empowerment Zone, or SLATE-Z), CRCD is committed to developing affordable housing in the area and increasing economic opportunity to enhance the quality of life in the community.

## Our pipeline projects include:



### **Vermont Manchester Development — HHH Funding \$12,400,000**

CRCD has partnered with Primestor and BRIDGE Housing to develop 180 units of housing at Vermont and Manchester as part of a mixed use development in South LA.



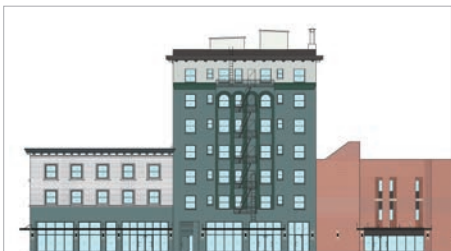
### **Ruth Teague Homes — HHH Funding \$7,180,000**

Ruth Teague Homes will provide 52 units of affordable and permanent supportive housing to chronically homeless transition-age youth with children, Veterans, and low-income households. All new homes include basic furnishings.



### **Marcella Gardens — HHH Funding \$12,000,000**

Marcella Gardens will provide 60 units of 100% permanent supportive housing to homeless transition-age youth, homeless adults, and homeless military veterans with on-site case management and basic furnishings.



### **5th & Central — HHH Funding \$15,120,000**

The development at Central Avenue and 5th Street will involve the redesign of three adjacent buildings to create 94 units of permanent supportive housing with on-site case management for chronically homeless.



### **La Prensa Libre — HHH Funding \$0**

La Prensa Libre Apartments is a new construction project with 105 units of permanent supportive housing for families and transition-age youth experiencing homelessness. This crucial development will be located at the corner of Los Angeles Street and E. Washington Boulevard, an area with one of the largest homeless populations in Los Angeles — and the largest number of unaccompanied minors of any service area.



### **The Lincoln Theater — HHH Funding \$0**

The historic Lincoln Theater will be restored and revitalized and 112 units of affordable and permanent affordable housing will be built on the adjacent property with a ground floor of mixed-use retail space.



# CRCD Enterprises



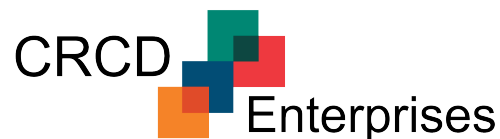
## Reinvesting in our community

CRCD Enterprises is a social enterprise with a California State General "B" Contractors license and offers excellent services in the fields of general construction, facilities maintenance, and urban infrastructure. In addition to its status as a fully insured and licensed general contractor, CRCD Enterprises offers neighborhood beautification and cleanup services to South LA, while providing training, certifications and first-time job and transitional work experience to individuals facing the highest barriers to employment.

CRCD Enterprises celebrated the grand opening of a new facility to better meet its expanded services in 2018. The new facility enables the company to obtain new and expanded contracts, create jobs in the community, and support team members in exercising their growing skillsets in career pathways that provide family-sustaining wages.

With increased capacity, CRCD Enterprises has expanded their service area outside of Council District 9 with new contracts to provide sidewalk repair and community beautification services to multiple Los Angeles Council Districts including CD-8, CD-10 and CD-1. The Clean Streets Crew can be seen throughout South Los Angeles while clearing overgrown lots, loading bulky items, removing graffiti, and more.

CRCD Enterprises employs individuals through the LA:RISE program with the City of Los Angeles, which is designed to help men and women with high barriers to employment get jobs and stay employed. During 2020, the CRCD Clean Streets Team removed more than 200,383 square feet of graffiti, reducing tension and violence in the community; collected 52,937 bags totaling 1,193 tons of trash and bulky items; and cleaned and repaired 636,496 blocks of sidewalks throughout South LA.



"Changing lives, one job at a time"





## Testimonials

Carl



"My name is Carl and this is my story. I first became homeless due to me running the streets and being in and out of jail. One day I told myself that I was tired of going house to house, couch to couch or even sometimes not having any place to go at all.

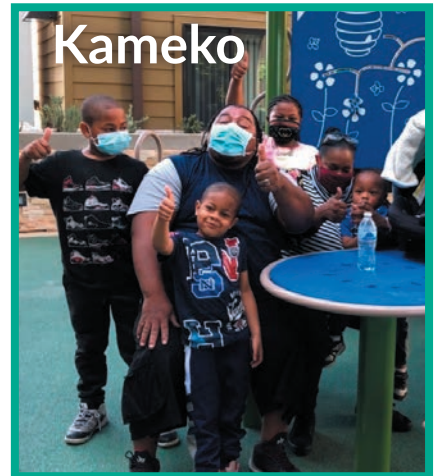
I learned from the program to keep going and never give up and work hard because hard work pays off. I stayed with the Ruth's Place program for 8 months. My biggest accomplishment with the program was during my 8th month, when my Rapid Rehousing Case Manager called me in and explained how they would help me move into my own place and give me a bigger look on life.

My goal now is to go to school and get a trade to obtain a better job so one day I could own my business. I just thank CRCD because without them none of this would be possible, they really brought me from a dark road into the light."

Kameko and their family first experienced homelessness due to family hardship. Sleeping in a car, unable to have hot meals or showers, the family first reached out for help from HOPICS who provided them with temporary housing and food and told them about the housing services available at CRCD.

Today, thanks to their perseverance and willingness to ask for help, they are home at Residences on Main! Kameko tells us that it "feels like Christmas" and wants to remind all others experiencing homelessness, "Do not give up. Stay strong. Keep the faith and always stay positive."

Kameko



Ahmad



The Host Homes program has given Ahmad financial opportunities that were not present before. He will be able to save money, fix his credit and not have to worry about where he will sleep for the next 6 months. He also believes that he has made a new friend through the program. His host, Pat, was also in construction. Coincidentally, they both know some of the same people from the union in Detroit.

Ahmad is very proud to have stepped up and asked for help when he needed it. Rather than give up, he realized he needed help and asked.

# CRCD AUDITED FINANCIALS

## STATEMENT OF ACTIVITIES

PUBLIC SUPPORT AND OTHER REVENUE		PERCENTAGE
Government Grants	\$9,531,156	69.86%
Private Contributions	\$2,289,027	16.78%
In-Kind	\$476,460	3.49%
Developer Fees	\$492,240	3.61%
Rents & Other Income	\$ 853,657	6.26%
<b>Total Revenue</b>	<b>\$13,642,540</b>	
EXPENSES		
Program Services	\$9,613,950	78.75%
Management & General	\$2,287,659	18.74%
Fundraising	\$306,264	2.51%
<b>Total Expenses</b>	<b>\$12,207,873</b>	
Change in Net Assets	\$1,434,667	
Net Assets at Beginning of Year	\$1,957,732	
<b>Net Assets at End of Year</b>	<b>\$3,392,399</b>	

## REVENUE

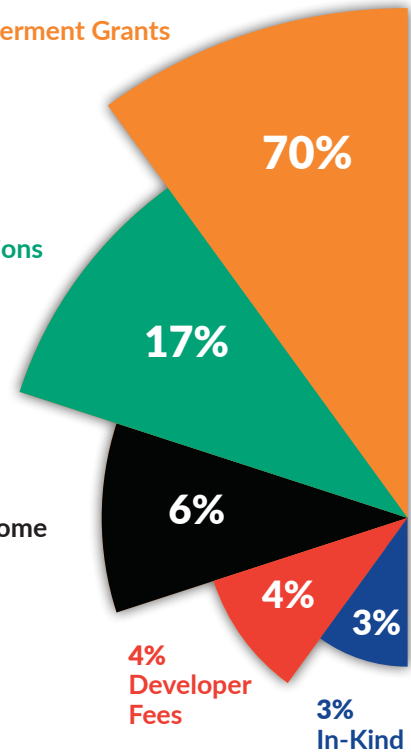
70% Government Grants

17% Private Contributions

6% Rents & Other Income

4% Developer Fees

3% In-Kind



## STATEMENT OF FINANCIAL POSITION

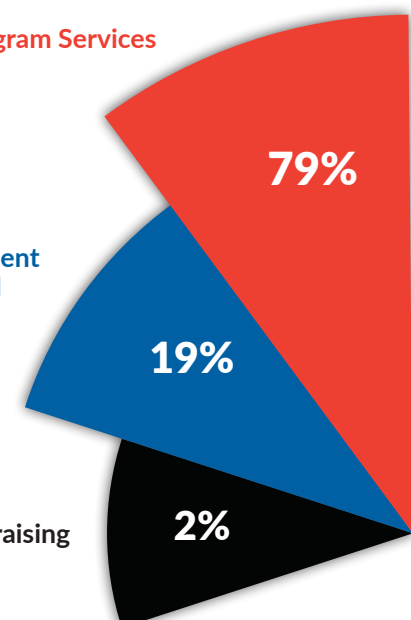
ASSETS	
Cash & Cash Equivalents	\$1,509,095
Accounts Receivable	\$3,513,104
Pledges Receivable	\$357,770
Deposits & Prepaid Expenses	\$367,227
Property, Plant & Equipment, Net	\$18,822,763
<b>Total Assets</b>	<b>\$24,569,958</b>
LIABILITIES & NET ASSETS	
Accounts Payable	\$1,862,796
Accrued Expenses	\$370,985
Deferred Revenue	\$624,803
Lines of Credit	\$307,452
Custodial Funds	\$275,839
Notes Payable, Net	\$17,735,685
<b>Total Liabilities</b>	<b>\$21,177,559</b>
NET ASSETS	
Without Donor Restrictions	\$2,092,650
With Donor Restrictions	\$1,299,749
<b>Total Net Assets</b>	<b>\$3,392,399</b>
<b>Total Liabilities &amp; Net Assets</b>	<b>\$24,569,958</b>

## EXPENSES

79% Program Services

19% Management & General

2% Fundraising



# 2020 FUNDERS & SUPPORTERS

The Coalition for Responsible Community Development is an organization built on collaboration. We appreciate your support because we know that we are stronger when we stand united.

We express our sincere gratitude to the following funders and supporters for their commitment to CRCD and the South Los Angeles community. With your partnership, CRCD is channeling the collective strength of South Los Angeles to revitalize our neighborhoods, improve the quality of life, and create new economic opportunities for our residents through education and workforce development.

The Ahmanson Foundation	JPMorgan Chase Foundation	National Youth Alliance for Boys & Men of Color
The Annie E. Casey Foundation	Carl & Roberta Deutsch Foundation	Nonprofit Finance Fund
Annenberg Foundation	The Durfee Foundation	OneWest Bank
AT&T Foundation	Enterprise Community Partners	Opportunity Youth United (OYU)
The California Wellness Foundation	Edison International	Orange County Community Foundation
The California Workforce Development Board (CWDB)	The Conrad N. Hilton Foundation	Pacific Western Bank
California Community Foundation	Housing Authority of the City of Los Angeles	Postmates
California Bank & Trust	Integrated Recovery Network (IRN)	The Ralph M. Parsons Foundation
California Governor's Officer of Business and Economic Development	Jobs for America's Graduates	RBC Community Investments Capital Markets
Capital One	Keck Foundation	REDF
Cathay Bank Foundation	Leonard Green & Partners	Reyes Coca-Cola Bottling Company
Cedars Sinai	LISC LA	Shelter Partnership
CIT Bank	Los Angeles County Department of Workforce Development, Aging and Community Services - (WDACS)	South Los Angeles Transit and Empowerment Zone (SLATE-Z)
City National Bank	Los Angeles Housing + Community Investment Department HHH	Southern California Gas Company
City of LA Council District 8	Los Angeles Homeless Services Authority	Southern California Grantmakers Program
City of LA Council District 9	Los Angeles Trade-Technical College (LATTC)	TK Foundation
City of LA Department of Public Works - Office of Community Beautification	Los Angeles County Development Authority	United States Department of Labor
City of LA Economic & Workforce Development Department	Low Income Investment Fund	United States Federal Emergency Management Agency
City of LA Proposition HHH Facilities Program	Los Angeles Promise Fund	United States Small Business Administration
City of LA Workforce Development Board	Los Angeles Southwest College	United Way of Greater Los Angeles
Compton College	NALCAB	Weingart Foundation
Corporation for Supportive Housing	National Equity Fund	Wells Fargo
County of Los Angeles Department of Health Services	Northrop Grumman	YouthBuild Charter School of California
County of Los Angeles Probation Department	NEF-LISC Bring Them HOMES with grant support from Citi Community Development and Northrop Grumman	YouthBuild USA
Danhaki Family Foundation	NeighborWorks America	
Dwight Stuart Youth Fund		
Green Fidler & Chaplin LLP		

# CRCD PROGRAM LOCATIONS

## Corporate Mailing Address:

7101 S. Central Ave., Unit 54249, Los Angeles, CA 90054

## ADMINISTRATION

CRCD Administration Office  
2510 S. Central Ave.  
Los Angeles, CA 90011

## YOUTH EDUCATION & TRAINING

Youth Development Department  
VCN Network YouthSource Center  
1006 E. 28th St.  
Los Angeles, CA 90011

## HOUSING & SUPPORT SERVICES

Ruth's Place - Drop-In Center  
for Homeless Youth  
SPA 6 Youth Lead -  
Coordinated Entry System  
4775 S. Broadway St.  
Los Angeles, CA 90037  
(Currently under renovation)

TEMPORARY LOCATION:  
4920 S. Avalon Blvd.  
Los Angeles, CA 90011

## YOUTH & ADULT TRAINING & WORKFORCE DEVELOPMENT SERVICES

Pueblo Del Rio - Social Hall  
1801 E. 53rd St.  
Los Angeles, CA 90058

## SOCIAL ENTERPRISE

CRCD Enterprises  
2415 S. Central Ave.  
Los Angeles, CA 90011

## ADULT WORKFORCE DEVELOPMENT & FINANCIAL COACHING

Workforce & Economic Development Dept.  
Vernon-Central/LATTC WorkSource Center  
& Financial Opportunity Center (Community site)  
Please note: Due to COVID-19 closures the  
WorkSource Center on the LATTC campus  
opened a satellite site:  
4201 S. Central Ave.  
Los Angeles, CA 90011

## REAL ESTATE DEVELOPMENT

Real Estate Development  
2332 S. Central Ave.  
Los Angeles, CA 90011

## FAMILIES

All Peoples Community Center  
(FamilySource Center)  
822 E. 20th St.  
Los Angeles, CA 90011

Our partner All Peoples Community Center offers  
free services to families, such as academic assistance,  
immigration services, financial support, and more -  
in English & Spanish.

Visit [www.allpeoplescc.org](http://www.allpeoplescc.org) for more information.



For more information:  
visit [www.coalitionrcd.org](http://www.coalitionrcd.org)  
call us at **213.743.6193**