



GROWTH ▶ through DIVERSITY

2021
ANNUAL REPORT



Since 2005, CRCDD has contributed to the growth and revitalization of the South Los Angeles community by fostering a safe and economically vibrant neighborhood for residents to thrive. What started with one contract for graffiti abatement has now grown to provide education and career path training, job placement assistance, financial education, and permanent supportive housing and paved the way toward increasing family-sustaining wages and improving the quality of life for youth and adult Angelenos in the area we serve.

Our comprehensive 360 spectrum of services support the community in all aspects, from housing to education and workforce development to job placement. We support young people and adults experiencing homelessness by providing access to housing, options for education, and job skills training that leads to family-sustaining wages. We actively seek out and work closely with community partners to ensure resources and referrals to other key services, such as mental health services, are readily available.

Today, CRCDD continues to expand to provide access to job skills training, education, workforce development, and housing support services. As we continue to recover from a global pandemic, CRCDD will not stop until the needs of our youth and adult Angelenos are met.

We strive as a community development corporation to fulfill this long-term mission and ensure that our client-centered approach meets us at the heart of our work of **Changing Lives and Building Neighborhoods Responsibility**.

In gratitude,



Mark A. Wilson
President, CEO/Co-Founder,
Coalition for Responsible
Community Development



Antonio Manning
Board President,
Coalition for Responsible
Community Development

Who We Are

The Coalition for Responsible Community Development (CRCDD) is committed to reducing economic and social barriers for the most vulnerable populations in South Los Angeles, including young people ages 16-24 (transition aged youth), low-income neighbors, people of color, working-class residents, veterans, homeless, disabled workers, and small businesses. Our ongoing support to provide education and career path training, job placement assistance, financial education, and permanent supportive housing has paved the way to increasing family-sustaining wages and improving the quality of life for youth and adult Angelenos. We strive as a community development corporation to fulfill this longterm mission and ensure that our client-centered approach meets us at the heart of our work of Changing Lives and Building Neighborhoods Responsibility.

CRCDD

BOARD OF DIRECTORS

Antonio Manning – Board President
President & CEO,
Affordable Living for the Aging

Bryan Wilson – Board Treasurer & Interim Secretary
Sr. Sales Executive,
Reyes Coca-Cola Bottling Company

Beatriz P. Flores, Esq. – Board Member
Attorney,
Law Office of Beatriz Pimentel Flores

Bruce Saito – Board Member
Director,
California Conservation Corps

The Honorable David Herriford – Board Member
Judge of the Los Angeles County Superior Court

Marcia Wilson Ph.D. – Board Member
Dean,
Pathway Innovation and Institutional Effectiveness
Los Angeles Trade-Technical College

Ron Mitnick – Board Member
Director,
Construction Management at
Citi Community Capital, CitiBank

Mark A. Wilson – President & CEO
President, CEO/Co-Founder,
Coalition for Responsible Community Development

TABLE OF CONTENTS

On the Road to Recovery
pages 3-4

Client-Centered Approach /
Meet Our Leadership
pages 5-6

Youth Workforce Development
pages 7-8

Adult Workforce Development
pages 9-10

Housing and Support Services
pages 11-12

Real Estate Development
pages 13-14

CRCD Enterprises
pages 15-16

Financials
page 17

Funders & Supporters
page 18

Program Locations
page 19

2021 was a year of Strength & Resiliency!

As the world progresses toward recovery from the COVID-19 pandemic, CRCD has worked diligently to support and lift the South LA community back to health. During the pandemic, South LA was one of the most deeply impacted areas in Los Angeles County, compounded by decades of disinvestment and historical neglect.

We're proud to report that our doors have never closed. We remained open throughout the pandemic and continued to operate during those challenging times to bring an array of new programs and services to the residents disproportionately affected by COVID-19. The unwavering support from funders and supporters over the past two years has contributed to our growth and success as an organization while restoring hope and opportunity to the people we serve.

Our highlights

- CRCD launched a new program aimed at supporting small rental property owners during the eviction moratorium. The Local Rental Owners Collaborative (LROC) was put in place to support “Mom and Pop” small rental property owners and residents severely impacted by the pandemic by paying up to 19 months of rental arrears and providing a building repair grant.
- We broke ground at our Ruth Teague Homes and Marcella Gardens development sites providing 110 units of permanent supportive housing to homeless transition-aged youth, adults, and unhoused military veterans.
- Our teams at CRCD Enterprises and South LA YouthBuild went to work on repairing residential homes immediately following the 27th Street Firework explosion that affected our South LA neighborhood.
- We revealed 2 new murals representing the diversity of the community we serve at Residence on Main.
- To narrow the digital divide, we opened an AT&T Connected Learning Center at the VCN YouthSource Center to provide community residents with access to new computers and free internet service in South LA.
- CRCD, in partnership with the USC Sol Price Center for Social Innovation, released “Resilience and Rebuilding: Recommendations for an Equitable Recovery from COVID-19 in South Los Angeles,” an in-depth study on the impact of the pandemic in South Los Angeles, with data-driven recommendations for recovery.



ON THE ROAD TO RECOVERY



In March 2020, the COVID-19 pandemic disproportionately impacted South LA's most vulnerable populations. Because vital services were already in demand due to decades of disinvestment and historical neglect, the pandemic created yet another gap in care and access for South LA residents. In 2021, CRCD increased its efforts to help bridge the gap and take the necessary steps to optimize recovery efforts.

Resilience and Rebuilding: Recovery Recommendations

- Increase access to preventative health care, including targeted information campaigns on insurance and vaccine options.
- Prepare and connect small businesses to non-predatory lending opportunities, technical support, and other resources for growth, including opportunities through local development projects and infrastructure improvements.
- Prepare and connect residents to regional training and employment opportunities in high-growth sectors that lead to family-sustaining wages.
- Increase the supply of affordable and permanent supportive housing and public supports to address the disproportionate homelessness rates of the region and increase the housing stability of economically vulnerable families and individuals.
- Improve educational pathways for high school completion, college access and persistence, and technical training opportunities, including equitable access to technology and broadband.
- Above all, ensure that the resources described above are distributed equitably, including for immigrant populations regardless of citizenship status.



TYRONE

I didn't have any options. I was most excited about the support. I learned financial literacy, I learned about interviews and resumes, and interview techniques.



JAMES

I was working to finish school and heard CRCD was the best option for a program that helps youth in trouble.

Our Historic Impact

Housing



1,300+
units in the
development
pipeline

► **\$350,000,000**
invested in South LA

► **463**
managed units in South LA

Transition-age Youth



3,000+
served

► **447**
housed in CRCD apartments

► **1,103**
placed in housing through CESY

► **2,639**
received services through Ruth's Place

Job Placement & Training



6,800+
served

► **5,300+**
low-income & reentry assisted

► **4,200+**
individuals served through
CRCD youth program

Education & Employment



2,900+
placements

► **1,287**
college credit earned through
CRCD assisted programs

► **784**
high school diplomas and
career credentials earned

Demographics Served in 2021



2,268
total served

18% Foster Youth

22% Justice Involved

29% Homeless

41% Hispanic/Latino

50% Black/African American

#MASKON



COMMUNITY & WORKFORCE DEVELOPMENT EXPERTS

The Leadership Team at CRCD is guided in their interactions with the community, partners, clients, and each other by these firmly held core values: Collaboration, Accountability, Effectiveness, Stewardship, Empowerment, and Commitment.

Meet our Executive Leadership Team:



MARK WILSON
PRESIDENT AND CEO



SELERIN NTAHITAGABIRA
CHIEF FINANCIAL OFFICER



JAHRELL THOMAS
CHIEF PROGRAMS OFFICER



ALEJANDRO MARTINEZ
PRESIDENT, CRCD PARTNERS, LLC



RICARDO MENDOZA
CHIEF BUSINESS DEVELOPMENT OFFICER

Leadership Team:



CAROLINA CORTAZAR
DIRECTOR OF HOUSING AND
SUPPORT SERVICES



LATEA DAVIS
ASSOCIATE DIRECTOR OF
YOUTH WORKFORCE
DEVELOPMENT



KENTA ESTRADA-DARLEY
DIRECTOR OF
SOUTH LA ALL-IN



JOSE GUADRON
DIRECTOR OF ADULT
WORKFORCE DEVELOPMENT



MARTHA LACOMBA
CONTROLLER



ELYCE MARTINEZ
DIRECTOR OF LEARNING
AND EVALUATION



LISA WINKLE
DIRECTOR OF MARKETING
AND COMMUNICATIONS

Our Client-Centered Approach

“The impact of the virus, which was felt more acutely by disadvantaged communities of color, presents unique challenges for the community of South LA, but it also presents an opportunity.”

Resilience and Rebuilding, 2021



Coalition for Responsible Community Development prioritizes **nine key elements** to approach the work that we do in South LA to ensure that we are doing our part to help lift up the lives of our residents to a position beyond the community's pre-pandemic state.

GO ABOVE AND BEYOND
TO PROVIDE A
SOLUTION OR A
POSITIVE INTERACTION
EVERY TIME.

SEEK TO UNDERSTAND
BEFORE RESPONDING.

SERVE WITH GRACE AND
HUMILITY. NEVER MAKE A
SITUATION WORSE OR
"ADD FUEL TO A FIRE."

BE ACCOUNTABLE AND
TAKE OWNERSHIP
WHEN WE MESS UP.

GOOD IS NOT GOOD
ENOUGH. BE PREPARED
TO PROVIDE EXCELLENT
SERVICE TO FULLY MEET
CLIENT'S NEEDS.

BUILD RAPPORT ON
GENUINE, AUTHENTIC
ENGAGEMENT, NOT JUST
PROGRAM OUTCOMES.

TAKE A BACK SEAT TO
THE CLIENT'S JOURNEY.
PROVIDE SUPPORT,
NOT DIRECTION.

POSITIVELY ENGAGE
EVERY PERSON YOU
ENCOUNTER.

YOUR WORD IS YOUR
BOND. MAINTAIN
INTEGRITY IN YOUR WORD
AND CONTINUALLY
EDUCATE YOURSELF IN
YOUR CRAFT.

WORKFORCE DEVELOPMENT FOR YOUTH

WE PROVIDE EDUCATION AND CAREER PATHWAYS TO DISCONNECTED AND FOSTER YOUTH

CRCD believes that education and workforce development go hand-in-hand. As a community development corporation, CRCD provides choices for Opportunity Youth. Our Youth Workforce Development Department uniquely focuses on serving disconnected transition-age youth, ages 16-24, who are out of work and out of school or are facing barriers to education that traditional systems cannot accommodate. Our high-quality programs and high-touch services aim to ensure that we prepare our young people to enter the community as educated, skilled, and ready to thrive.



737

Youth served



121

High School Diplomas
and Credentials earned



510

Education/Employment
Placements



\$1,000,000+

Wages Earned

72 Current and former foster
youth served

49 Current and former foster
youth placed in employment

CRCD provides nationally recognized programs that address and reduce barriers for the youth we serve. We are committed to our client-centered, trauma-informed approach which combines education, workforce development, housing, financial coaching, and employment opportunities.

CRCD operates the following programs:

- Jobs for Los Angeles Graduates
- South Los Angeles YouthBuild
- AmeriCorps
- Community Uniting for Resolution and Empowerment (CURE)
- Project Tipping Point for Foster Youth
- Vernon-Central Network YouthSource Center

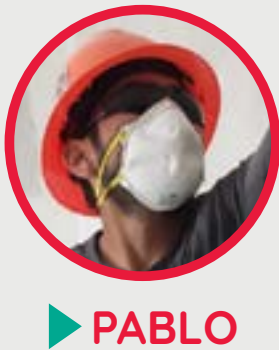
All of these are a part of local and national institutions funded by the City of Los Angeles, the U.S. Department of Labor, YouthBuild USA, AmeriCorps, Jobs for America's Graduates, and private philanthropy.

Bridging the Gap to Success

CRCD also operates the CRCD Academy, an accredited high school in partnership with YouthBuild Charter School of California and enrolls students ages 16-24 seeking a high school diploma. Students are part of the South LA YouthBuild and AmeriCorps programs and are involved in community service, leadership development, and career exploration. Graduates receive their high school diploma and earn an industry-recognized credential from Los Angeles Trade-Technical College and/or CRCD Enterprises.

◀ ***72%** of South LA residents have an educational attainment of a high school diploma or less

As COVID restrictions prevented a traditional graduation ceremony, CRCD held a pop-up graduation to congratulate the Class of 2021 on all of their hard work and achievements.



SUCCESS STORY

Pablo graduated from CRCD Academy while enrolled in the South LA YouthBuild and AmeriCorps programs to address his interest in human needs and helping those less fortunate. He received paid work experience and education in the construction trades while taking full advantage of the services offered at CRCD. Pablo obtained his Occupational Safety and Health Administration (OSHA-10), First-Aid, and Forklift Operator certifications while receiving his Home Builders Institute Pre-Apprenticeship Certificate Training (HBI-PACT) Carpentry certification. With more than 125 hours of hands-on experience, Pablo is using his skills to give back to his community and improve living conditions in South LA.

“REMOTE LEARNING DURING 2020 PRESENTED A RANGE OF NEW CHALLENGES FOR K-12 STUDENT ATTENDANCE AND ACHIEVEMENT BECAUSE RELIABLE INTERNET AND DEVICE ACCESS QUICKLY BECAME POINTS OF DISPARITY.”

The pandemic made us painfully aware of the digital divide affecting our South LA community. To provide our young people a pathway toward success, we were happy to welcome an AT&T Connected Learning Center at the CRCD-operated VCN YouthSource Center to assist with eliminating digital barriers for underserved students and families.

This center has not only allowed our participants to access free internet services but also digital tools and educational content that will allow them to participate in virtual learning, apply for jobs and set themselves up for success in the future.

◀ ***36%** of Latino students and 31% of Black students lack access to high-speed internet and a computer at home, compared to 11% white students.

WORKFORCE DEVELOPMENT FOR ADULTS

WE PROVIDE PATHWAYS TO ECONOMIC STABILITY

CRCD's Adult Workforce Development Department is committed to training and preparing our South LA adult residents to be workforce ready. We focus on identifying employment pathways and connecting veterans, dislocated workers, and the re-entry population to opportunities to succeed in a career with family-sustaining wages.

As the lead agency operating the Vernon-Central/LATTC WorkSource Center, CRCD provides personalized industry training, workforce readiness, financial coaching, entrepreneur training, 1-on-1 career coaching, and support services to remove barriers to employment.



603

Served



76

Skills training



490

employment placements



\$17.56

Average

351 Reentry participants served

133 Reentry participants placed in employment

CRCD operates the following programs:

- INVEST
- Targeted Local Hire
- LA:RISE
- Prison to Employment (P2E)
- Multi-Craft Core Curriculum (MC3) Training
- COVID-19 Dislocated Workers
- Bridges to Career Opportunities (BCO)



Connecting our Residents to Career Pathways

Prior to the pandemic in 2019, the median household income in South LA was just under \$43,500 – significantly lower than the median income of the County (\$68,000)

As COVID-19 hit, many residents in South LA lost their jobs and were unable to provide for their families. At CRCDD, our workforce development team connected residents with employment opportunities and paid training programs, especially those who were affected by pandemic layoffs.



▶ THOMAS

SUCCESS STORY

Thomas came to the Vernon-Central/LATTC WorkSource Center seeking help with job placement. Upon re-entering back into the community, Thomas sought out local resources that could assist him while on probation. He then enrolled in the INVEST program, which provides training and support to individuals on probation and entering the workforce on a meaningful career path.

“I’ve learned that real dedication can turn your life positive. CRCDD blessed me so much. I will always remember the opportunities they opened for me.”

After a few months, Thomas secured full-time employment as a plumber with Flood Brothers plumbing.

#IGOTTHEJOB

Along with new programs, we are happy to showcase our hiring fairs. CRCDD maintains relationships with local businesses and hosts quarterly hiring fairs to provide our clients an opportunity for employment.



HOUSING AND SUPPORT SERVICES

WE HOUSE HOMELESS YOUTH

CRCD has a unique focus on assisting transition-aged youth ages 18-24 experiencing homelessness or at risk of becoming homeless by providing permanent supportive housing and access to housing resources that best fit their needs. CRCD currently serves as the lead agency in Service Planning Area (SPA) 6 in South Los Angeles in the Countywide Youth Coordinated Entry System (YCES), which aims to address and combat homelessness in Los Angeles.

Currently, CRCD provides comprehensive on-site support services in nine of our permanent supportive housing developments within South LA. Through our Housing and Support Services Department, we aim to assist disadvantaged youth in building independent living skills and economic self-sufficiency necessary for a successful transition to adulthood. Services include case management, access to employment through the Vernon-Central/LATTC WorkSource Center, education and career pathways, and housing programs like the Section 8 voucher program and the CRCD Rapid Rehousing Program.



783

Served



366

Housed



1,405

Meals provided



98%

Retained permanent housing

\$545,456 in rental assistance including rental arrears, rental assistance, host home stipend and security deposit.



To better serve young people experiencing homelessness, CRCD operates Ruth's Place, a drop-in center for those who would otherwise be on the streets. Ruth's Place provides clothing, food, access to showers, transportation support, mail service, a lounge area, laundry facilities, and access to support services and referrals.

Housing our Residents

One of the impacts of COVID-19 has been an increase in homelessness. South LA was faced with the highest number of cases in LA County and the highest rate of unemployment. With that, many were unable to afford their homes and fell into homelessness. At CRCD, it is our job to focus on housing our youth and families and addressing the barriers that come with their experiences.



63% of South LA renters are considered “rent burdened” and one in three are unable to cover a \$400 emergency expense



► VANTRICE

SUCCESS STORY

Vantrice is a single mother of four, a full-time student, and a part-time worker. Before CRCD, Vantrice was homeless, sleeping in her van with her children with no place to go. She struggled to find work and childcare resources that could help her and her children.

She was referred to CRCD with hope that she would find housing. We are happy to report that we successfully secured housing for her and her children. Now, Vantrice will be finishing up cosmetology school and aims to give back to the community by providing makeovers to other women experiencing homelessness.



CHANGING LIVES, ONE HOME AT A TIME

REAL ESTATE

ADDRESSING AFFORDABLE HOUSING CRISIS IN SOUTH LA

At CRCD's Real Estate Department, CRCD Partners, LLC, we are recognized for developing award-winning affordable housing and permanent supportive housing for transition-aged youth exiting foster care, homeless youth and adults, and homeless veterans and families. We currently own and operate nine developments that represent a combined investment of \$350 million in South LA housing and real estate, including 463 units of affordable and permanent supportive housing, commercial space for our social enterprise, and a drop-in center for homeless youth, Ruth's Place.

In 2021, CRCD celebrated the groundbreaking of two new affordable housing developments, Ruth Teague Homes and Marcella Gardens. Together they will provide 112 units of affordable and permanent supportive housing to the South Los Angeles community. We were honored to join forces with our development partners on these projects, Amity Foundation and New Economics for Women, who share our mission of providing affordable housing to those experiencing homelessness and to increasing economic opportunity for our residents.

 **South LA has an affordable housing shortage of 46,255 units for its lowest-income residents**



Local Rental Owners Collaborative

During a time of uncertainty for many small rental property owners and residents severely impacted by the pandemic, CRCD collaborated with Enterprise Community Partners and the Chan-Zuckerberg Initiative to launch the Local Rental Owners Collaborative (LROC). This program helps preserve affordable housing in South Los Angeles to benefit small rental property owners and their residents. As the rise of COVID-19 affected disadvantaged populations in South LA, about 56% of renters lost employment income by the end of 2020 and could not afford the rent needed to preserve their homes. LROC provided 19 months of rental arrears along with a building repair grant to property owners with two to 20 units of affordable housing.

In 2021, we unveiled two murals at Residences on Main. Created by Fabian Debora, a well-known Chicano artist and Executive Director of the Homeboy Art Academy at Homeboy Industries. The new artwork serves to further beautify a blighted corner in the community that had been condemned as a nuisance by the City of Los Angeles in 2010.

Upcoming Pipeline Projects



EVERMONT (FORMERLY — VERMONT MANCHESTER DEVELOPMENT)

CRCD has partnered with Primestor and BRIDGE Housing to develop 180 units of housing at Vermont and Manchester as part of a mixed use development in South LA.



5TH & CENTRAL

The development at Central Avenue and 5th Street will involve the redesign of three adjacent buildings to create 94 units of permanent supportive housing with on-site case management for chronically homeless.



LA PRENSA LIBRE

La Prensa Libre Apartments is a new construction project with 105 units of permanent supportive housing for families and transition-age youth experiencing homelessness. This crucial development will be located at the corner of Los Angeles Street and E. Washington Boulevard, an area with one of the largest homeless populations in Los Angeles — and the largest number of unaccompanied minors of any service area.



MARCELLA GARDENS

Marcella Gardens will provide 60 units of 100% permanent supportive housing to homeless transition-age youth, homeless adults, and homeless military veterans with on-site case management and basic furnishings.



RUTH TEAGUE HOMES

Ruth Teague Homes will provide 52 units of affordable and permanent supportive housing to chronically homeless transition-age youth with children, Veterans, and low-income households. All new homes include basic furnishings.

CRCD ENTERPRISES

CHANGING LIVES, ONE JOB AT A TIME

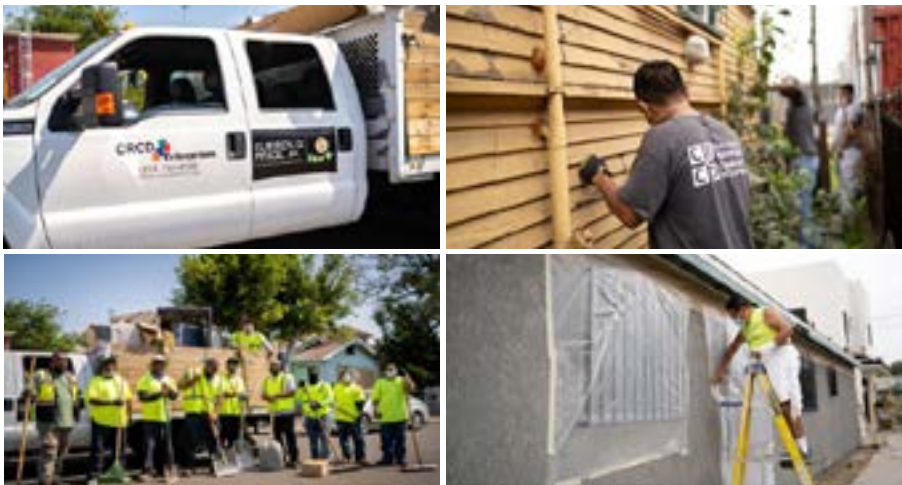
CRCD Enterprises is a social enterprise with a California State General “B” Contractors license that offers excellent services in general construction, facilities maintenance, and urban infrastructure. In addition to its status as a fully insured and licensed general contractor, CRCD Enterprises offers neighborhood beautification and clean-up services to South LA, while providing first-time job and transitional work experience to individuals facing the highest barriers to employment.

With increased capacity, CRCD Enterprises has continued to operate to provide community beautification services to several districts outside of Council District 9 by removing graffiti, picking up bulky items, clearing trash on the streets and overgrown lots, weed abatement, and more.



“We are here every day. Residents now trust us, they see us. We make sure that whatever they need, it’s an arm’s reach away.”

**- Joe Gamez,
Vice President of
CRCD Enterprises**



During 2021, the CRCD Enterprises Team:

- Removed more than 9,293,665 square feet of graffiti, reducing tension and violence in the community
- Collected 65,142 bags and 57,724 bulky items totaling 1,257 tons of trash cleared from South LA streets
- Cleaned and repaired 636,496 blocks of sidewalks throughout South LA

#GoGreen

The City of Los Angeles launched a new program with CRCD Enterprises called Clean L.A. Jobs, which is a paid training program for Angelenos that provides beautification services in the community. This program also serves as a pathway to long-term employment with the City of Los Angeles. Clean L.A. Jobs removes barriers and challenges to disadvantaged residents while helping the neighborhood stay clean and green!



On June 30th, 2021, an LAPD fireworks explosion erupted in a South LA neighborhood on 27th street. Various agencies of the City of LA, Council District 9, and community partners began reaching out to provide helping hands to those affected by the tragedy. CRCD's social enterprise, CRCD Enterprises, immediately sprang into action to help rebuild and repair the homes of the families in our community who were impacted by the blast.

Following the 27th Street fireworks explosion, CRCD Enterprises:

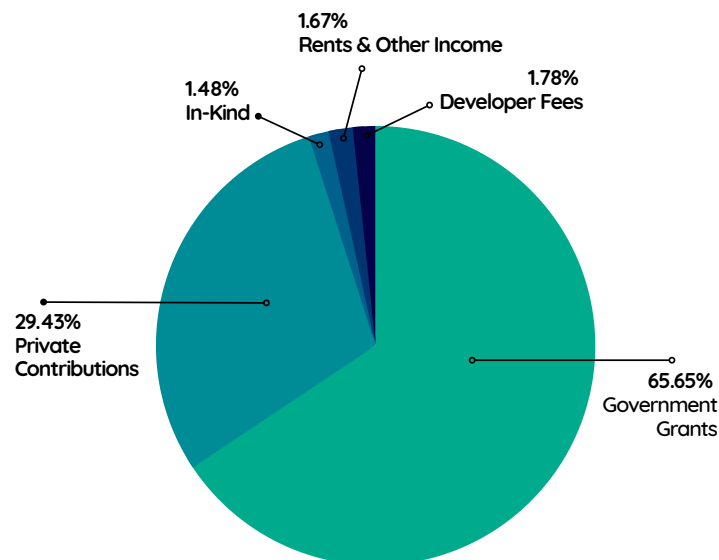
- Touched a total of 24 damaged homes, which included initial boarding up of windows, and debris removal
- Repaired sidewalks that were destroyed by the blast in 22 locations along 27th Street.
- Out of those 24 homes, the organization repaired 17 homes by installing new windows, painting exteriors, fixing stucco, repairing damaged wood and ironwork, plumbing work and updating kitchen and bathroom cabinets
- A red-tagged home on 27th St. received a complete custom makeover with windows, bedrooms, bathrooms and kitchen, as well as new foundation and roof, plumbing and electrical work, and an HVAC system.
- More than \$1 million in repairs and counting to date
- AND THE WORK CONTINUES

CRCO 2021 FINANCIALS

STATEMENT OF ACTIVITIES

PUBLIC SUPPORT AND OTHER REVENUE		PERCENTAGE
Government Grants	13,597,108	69.86%
Private Contributions	6,094,488	16.78%
In-Kind	306,860	3.49%
Developer Fees	368,000	3.61%
Rents & Other Income	345,012	6.26%
Total Revenue	\$20,711,469	
EXPENSES		
Program Services	13,643,211	81.60%
Management & General	2,864,635	17.13%
Fundraising	212,066	1.27%
Total Expenses	\$16,719,913	
Change in Net Assets	\$3,991,556	
Net Assets at Beginning of Year	\$3,595,342	
Net Assets at End of Year	\$7,586,898	

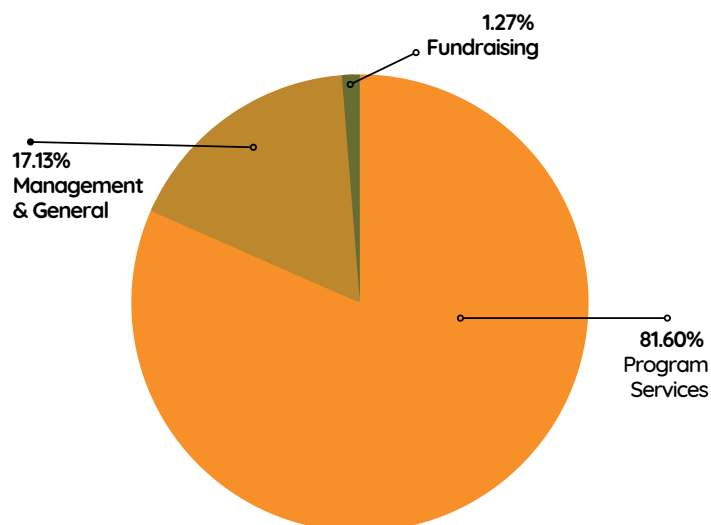
REVENUE



STATEMENT OF FINANCIAL POSITION

ASSETS	
Cash & Cash Equivalents	3,197,844
Accounts Receivable	5,270,676
Pledges Receivable	3,170,962
Deposits & Prepaid Expenses	865,176
Property, Plant & Equipment, Net	3,199,194
Total Assets	15,703,852
LIABILITIES & NET ASSETS	
Accounts Payable	1,234,926
Accrued Expenses	691,229
Deferred Revenue	2,052,061
Lines of Credit	190,397
Custodial Funds	162,898
Notes Payable, Net	3,785,443
Total Liabilities	\$8,116,954
NET ASSETS	
Without Donor Restrictions	\$3,073,746
With Donor Restrictions	\$4,513,152
Total Net Assets	\$7,586,898
Total Liabilities & Net Assets	\$15,703,852

EXPENSES



2021 FUNDERS & SUPPORTERS

The Coalition for Responsible Community Development is an organization built on collaboration. We appreciate your support because we know that we are stronger when we stand united.

FUNDERS AND SUPPORTERS:

We express our sincere gratitude to the following funders and supporters for their commitment to CRCD and the South Los Angeles community. With your partnership, CRCD is channeling the collective strength of South Los Angeles to revitalize our neighborhoods, improve the quality of life, and create new economic opportunities for our residents through education and workforce development.

Ahmanson Foundation
AmeriCorps Corporation for National and Community Service
Amity Foundation
Annenberg Foundation
Annie E. Casey Foundation
AT&T
Bank of America
Board of State and Community Corrections
California Community Foundation
California Wellness Foundation
The California Workforce Development Board
AmeriCorps California Community Foundation
California Bank & Trust
California Governor's Officer of Business and Economic Development
Capital One
Carl & Roberta Deutsch Foundation
Cathay Bank Foundation
Cedars Sinai
Century California Fund
Chan Zuckerberg Initiative
CIT Bank (First Citizens Bank)
Citi Foundation
City National Bank
City of Los Angeles
City of Los Angeles Council District 8 - Councilman Marqueece Harris-Dawson
City of Los Angeles Council District 9 - Councilman Curren D. Price, Jr.
City of LA Department of Public Works - Leonard Green & Partners
Local Initiatives Support Corporation
Los Angeles County Department of Workforce Development, Aging and Community Services- (WDACS)
Los Angeles Housing + Community Investment Department HHH
Los Angeles Homeless Services Authority
Los Angeles Trade-Technical College
Los Angeles County Development Authority
Low Income Investment Fund
Los Angeles Promise Fund
Los Angeles Southwest College
NALCAB
National Equity Fund
National Youth Alliance for Boys & Men of Color
NeighborWorks
Nonprofit Finance Fund
Northrop Grumman
OneWest Bank
Opportunity Youth United
Orange County Community Foundation
Pacific Western Bank
Pfaffinger Foundation
Postmates

City of LA Department of Public Works - Office of Community Beautification
City of LA Economic & Workforce Development
City of LA Proposition HHH Facilities Program
City of LA Workforce Development Board
Compton College
Community Health Councils
Conrad N. Hilton Foundation
Corporation for Supportive Housing
County of Los Angeles Department of Health Services (DHS)
County of Los Angeles Department of Public Social Services (DPSS)
County of Los Angeles, Probation Department
Danhaki Family Foundation
Durfee Foundation
Dwight Stuart Youth Fund
Edison International
Eli and Edythe Broad Foundation
Enterprise Community Partners
First Citizens Bank
For Freedoms
Green Fidler & Chaplin LLP
Held Foundation
Housing Authority of the City of Los Angeles
Integrated Recovery Network
Jobs for America's Graduates
John Burton Advocates for Youth
JP Morgan Chase Foundation
Keck Foundation | W.M. Keck Foundation
Lee Andrews Group
Ralph M Parsons Foundation
RBC Community Investments Capital Markets REDF
Reyes Coca-Cola Bottling Company
Roy + Patricia Disney Family Foundation
San Francisco Foundation
Shelter Partnership
Silicon Valley Community Foundation
South Los Angeles Transit and Empowerment Zone (SLATE-Z)
Southern California Gas Company
Southern California Grantmakers Program
State of California Workforce Development Board
Thomas Safran & Associates
TK Foundation
U.S. Department of Labor (DOL)
United States Federal Emergency Management Agency
United States Small Business Administration
United Way of Greater Los Angeles
University of California Los Angeles
Weingart Foundation
Wells Fargo Bank
YouthBuild Charter School of California
YouthBuild USA

CRCO PROGRAM LOCATIONS

Administration

CRCO Administrative Office

2510 S. Central Ave. Los Angeles, CA 90011

Workforce Development

Youth and Young Adults ages 16-24:

CRCO VCN YouthSource Center:

28th Street YMCA

1006 E 28th Street, Los Angeles, CA 90011

CRCO Academy

Los Angeles Trade-Technical College Campus
400 W Washington Blvd., Los Angeles, CA 90015
(Sage Hall H-130)

Adults ages 18 and over:

CRCO Vernon-Central/LATTC WorkSource Center

400 W. Washington Blvd. Los Angeles, CA 90015
(Tom Bradley Center for Student Life)

Pueblo Del Rio

Social Hall

1801 E 53rd Street, Los Angeles, CA 90015

Housing and Support Services

CRCO Housing and Support Services:

4201 S Central Ave, Los Angeles, CA 90011
(Temporary Location)

Ruth's Place Drop-in Center for Homeless Youth:

4475 S Broadway, Los Angeles, CA 90037

Temporary Location: 4201 S Central Ave.
Los Angeles, CA 90011

Real Estate

CRCO Partners, LLC:

2332 S Central Ave., Los Angeles, CA 90011

Social Enterprise

CRCO Enterprises

2415 S Central Ave., Los Angeles, CA 90011

Families

All Peoples Community Center

822 E 20th Street, Los Angeles, CA 90011

Our partner, All Peoples Community Center offers free services to families, such as academic assistance, immigration services, financial support, and more – in English and Spanish.

Visit www.coalitionrcd.org
or call us at 213.743.6193
for more information.

