

Annual REPORT 2022



Changing Lives, Building
Neighborhoods **Responsibly**

A LETTER FROM OUR CEO AND BOARD CHAIR

Dear Friends and Supporters,

We are honored to share with you the remarkable accomplishments of CRCDD in our ongoing mission to change lives and build neighborhoods responsibly as we uplift the South Los Angeles community. Since our inception in 2005, CRCDD has played a pivotal role in fostering growth and revitalization.

Our journey commenced with a single contract aimed at graffiti abatement, and over the years, we have expanded our reach and diversified our services. Today, our commitment encompasses a comprehensive suite of initiatives spanning education, career path training, job placement assistance, financial education, small business services, and permanent supportive housing. These services have collectively paved the way for elevating the quality of life for the youth of Los Angeles and their families within our service areas.

Our approach is holistic, offering a full spectrum of services that address housing, education, workforce development, job placement, and economic development. In addition to our core services, we actively collaborate with our esteemed partners to ensure that essential resources and referrals to critical services are readily available.

As we reflect on our journey thus far, we are deeply grateful for the unwavering support of our donors, volunteers, and advocates. It is your dedication and commitment that enable us to make a meaningful impact, year after year. Together, we continue to transform lives and build a brighter future for the South Los Angeles community.

With gratitude and determination,

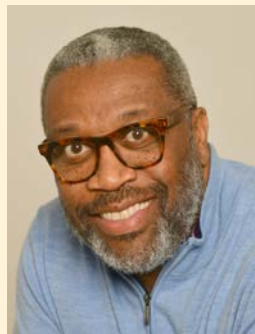
**Mark A. Wilson -
President, CEO, and Co-Founder
Coalition for Responsible
Community Development**

Mark A. Wilson



**Antonio Manning -
CRCDD Board President
Coalition for Responsible
Community Development**

Antonio Manning



BOARD OF DIRECTORS

**Antonio Manning -
Board President**
President and CEO,
Affordable Living for the Aging

**Bryan Wilson - Board Treasurer and
Interim Secretary**
Sr. Sales Executive,
Reyes Coca-Cola Bottling Company

Beatriz P. Flores, Esq. - Board Member
Attorney,
Law Office of Beatriz Pimentel Flores

Bruce Saito - Board Member
Director,
California Conservation Corps

**The Honorable David Herriford -
Board Member**
Judge,
Los Angeles County Superior Court

**Marcia Wilson, Ph.D. -
Board Member**
Dean,
Pathway Innovation and Institutional
Effectiveness

Ron Mitnick - Board Member
Director,
Construction Management at
Citi Community Capital, CitiBank

Mark A. Wilson - President and CEO
President, CEO, and Co-Founder
Coalition for Responsible Community
Development

TABLE OF CONTENTS

I. INTRODUCTION

Community and Workforce Development Experts	3
Our Mission and Impact	4
Workforce Development for Youth	5-6
Workforce Development for Adults	7-8
Housing and Support Services	9-10
Southeast LA BusinessSource Center	11-12
Real Estate	13-14
CRCD Enterprises	15-16
Funders and Supporters	17
Audited Financials	18

Community and Workforce Development Experts

The Leadership Team at CRCD is guided in their interactions with the community, partners, clients, and each other by these firmly held core values – Collaboration, Accountability, Effectiveness, Stewardship, Empowerment, and Commitment.

Executive Leaders



Mark Wilson
President & CEO



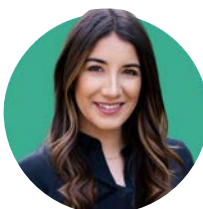
Jahrell Thomas
Chief Operations
Officer



Selerin Ntahitagabira
Chief Financial
Officer



Ricardo Mendoza
Chief Business
Development Officer



Aissa Cerda
Chief Programs
Officer



Veronica Garcia
Chief Human
Resources Officer

Leadership Team



Carolina Cortazar
Director of Housing
and Support Services



Elyce Martinez
Senior Director of
Learning and
Evaluation



**JaVette Adams
Pettaway**
Associate Director
of Youth Workforce
Development



Jose Guadron
Director of Adult
Workforce
Development



Ken Hitts
Director of
Economic
Development



**Kenta Estrada-
Darley**
Director of South
LA All-In



Latea Davis
Associate
Director of Youth
Special Projects



Lisa Winkle
Director of
Marketing and
Communications



**Nelson Murcia
Chavez**
Associate Director of
Housing and Support
Services

OUR MISSION AND IMPACT

Our mission is to sustain, coordinate, and improve local planning, development, and community services that address the needs of low-income and working-class residents and small businesses in South Los Angeles. We strive to fulfill this mission by applying a high-touch case management and trauma-informed care approach that includes project-based learning designed to meet young people where they are, which is at the heart of our work of ***Changing Lives and Building Neighborhoods Responsibly***.

DEMOGRAPHICS SERVED IN 2022

In 2022, CRCD served a total of 3,323 clients.

11% Foster Youth

19% Justice Involved

42% Black/African American

45% Hispanic/Latino

47% Homeless

752

Employment
Placements

334

Foster youth
served

541

Re-Entry
population
served

76%

Retained permanent
supportive housing
for 1+ years.

Since our founding in 2005, our impact to date includes:

3,700+

Education/employment
placements

6,000+

Transition-aged youth
served

8,225+

Served with job
placement and training



CRCD Academy 2022 graduates

Workforce Development for Youth

Enhancing accessibility to educational opportunities

We are committed to providing educational opportunities and ensuring that individuals have access to the resources they need to succeed. We recognize that education is the cornerstone of personal and professional growth, and we work tirelessly to enhance accessibility to educational opportunities for individuals in South Los Angeles.

Our approach includes providing academic support services, such as tutoring and mentoring, as well as offering career coaching and guidance to help individuals identify educational pathways that align with their interests and career goals. Our aim is to ensure that every individual in our community has access to high-quality education and the resources necessary to achieve academic success.

CRCD SUCCESS STORIES

"CRCD has really made an impact through all the support they offered me."



Raquel,
South LA YouthBuild participant

1,122

Total Youth
Served in 2022

142

High School Diplomas
and Credentials earned

378

Education and employment
placements

\$900K

Wages earned

CRCD Academy Graduation

This year, CRCD was excited to host an in-person graduation for our CRCD Academy Class of 2022 graduates. Held on the campus of LATTC after nearly two years, we were joined by our supportive teachers, families, and friends. We admire the perseverance and persistence displayed by our graduates and are eager to witness their promising future endeavors.

CRCD Academy is a partnership between CRCD, Los Angeles Trade-Technical College, and YouthBuild Charter School of California that offers young people ages 16–24 an expedited path to earn an accredited high school diploma while incorporating project-based learning, community service, leadership, and career preparation.

"When discussing workforce development, we emphasize the importance of providing access to education and cultivating valuable skill sets. This, in turn, paves the way for individuals to attain family-sustaining wages."



The AT&T Connected Learning Center at the VCN YouthSource Center at CRCD.



Photo 1: CRCD Academy Class of 2022

Photo 2: Chief Programs Officer Jahrell Thomas, and Director of Workforce Development, Jose Guadron presented CRCD Academy graduates with high school diplomas



Bridging the Digital Divide with the new AT&T Connected Learning Center

The South LA community was particularly affected by the pandemic, facing numerous challenges, including limited access to high-speed internet and devices, which hindered digital learning. The newly opened AT&T Connected Learning Center operated at the VCN YouthSource Center aims to overcome these accessibility barriers and support young people by offering free internet connectivity, new Dell computers, and access to educational content and digital tools.



Workforce Development for Adults

Quarterly job fair hosted at by CRCRD at Los Angeles Trade Technical College

Expanding Pathways to employment and industry training

At CRCRD, we believe that access to workforce development opportunities is essential to promoting economic growth and improving the lives of residents in South Los Angeles. As such, we have prioritized expanding our range of workforce development services, including career coaching, job placement assistance, and vocational training. Our programs are designed to equip individuals with the necessary skills to succeed in today's job market, and we strive to provide support to both youth and adults alike to build a stable and fulfilling career with family-sustaining wages.

CRCRD SUCCESS STORIES

"I've learned that real dedication can turn your life positive."



Thomas, INVEST program participant

1,434

Total Adults Served in 2022

203

Skills training received

437

Re-entry individuals served

\$18.66

Average wage earned

Opportunity Wednesdays at CRCD!

CRCD operates the Vernon-Central/LATTC WorkSource Center to enhance and strengthen the City of Los Angeles public workforce system. The center focuses on assisting Angelenos, including those with significant employment barriers and youth, in securing high-quality jobs and long-term careers while also aiding employers in hiring and retaining skilled workers.

To better connect job seekers to employment opportunities, the Vernon-Central/LATTC WorkSource Center developed 'Opportunity Wednesdays', where every Wednesday, we host employers within difference sectors of hospitality, construction, security, transportation, and more. We also host quarterly customized job fairs to provide additional resources to the community.

"CRCD endeavors to identify employment pathways and provide individuals with the opportunities to succeed in a career with family sustaining wages."



Multi-Craft Core Curriculum (MC3) certification training graduates receiving their certificates of achievement and connecting to Apprenticeships in Trade Unions



Photo 1: Vernon-Central/LATTC WorkSource Center

Photo 2: Quarterly job fair at Los Angeles Trade-Technical College

New MC3 training to provide job training in construction

The LA/OC Building & Construction Trades Council Apprenticeship Readiness Fund and CRCD collaborated to launch the Multi-Craft Core Curriculum (MC3) certification training.

This new training at CRCD is designed to offer paid construction apprenticeship training to aspiring Angelenos while also facilitating connections with local trade unions after graduation and providing opportunities to work on CRCD's new Vermont/Manchester and Compton development sites.



Housing and Support Services

Ruth's Place Homeless Youth Drop-in Center on Broadway

Enhancing accessibility to educational opportunities

Homelessness is a pervasive issue in South Los Angeles, and CRCD is committed to addressing this challenge head-on. CRCD works tirelessly to provide various housing options for homeless individuals and families. Our approach is about providing temporary shelter and ensuring that individuals can access permanent supportive housing that promotes long-term stability.

We also provide support services such as financial education, job skills training, and mental health services to our clients, ensuring they have the resources necessary to transition out of homelessness and become self-sufficient. Our goal is to empower residents to achieve long-term housing stability, improve their quality of life, and thrive in the communities we serve.

CRCD SUCCESS STORIES

"[CRCD] provides hope for people who live in the nearby area to have sustainable housing that elevates them and helps them keep evolving and progressing in life."



CRCD Housing and Support Services Client, Ruth

801

Total Served in 2022

389

Housed

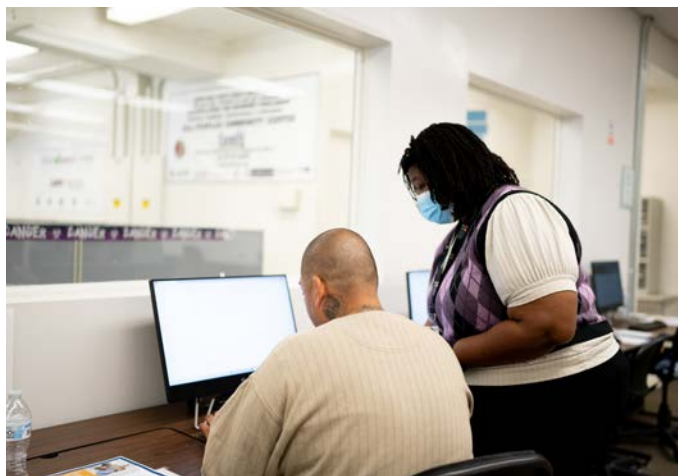
948

Meals provided

LAHSA'S 2022 Homeless Count

CRCD hosted the Los Angeles Homeless Services Authority, Mayor Eric Garcetti, and Supervisor Holly J. Mitchell at the VCN YouthSource Center as they gathered to deliver the 2022 homeless count data. As the Regional Lead for the Youth Coordinated Entry System for SPA6, CRCD leads the LA youth homeless count, where we survey youth experiencing or at risk of becoming homeless. Our efforts contribute to the total census count. CRCD is committed to continuing our work in South LA to provide access to permanent supportive housing and increased housing support services. our hub for Housing and Support Services is Ruth's Place homeless youth drop-in center for young people ages 18-24 experiencing homelessness or wishing to access services.

"Our Support Services department is focused on helping people build the independent living skills and economic self-sufficiency required to support a successful transition to adulthood."



CRCD team members assisted LA residents with completing HACL's Section 8 Housing Wait List Application



Photo 1: Our CRCD staff and youth volunteers out in the field collecting data for the 2022 Youth Homeless Count
Photo 2: CRCD and LAHSA with Mayor Garrett at the Homeless Count Press Conference

CRCD provides assistance with HACL's Section 8 Housing Wait List Application

CRCD acted swiftly to offer aid to residents in need and provided support to HACL's Section 8 application process. CRCD assisted 96 area residents at our assistance centers, offering services such as email set-up, free access to computers and internet, assistance completing the form, translation services, and disability assistance. At CRCD, we take pride in our commitment to serving the community.



Southeast LA BusinessSource Center

Southeast LA BusinessSource Center expands services to small businesses

Serving the South LA community with expert business services

Supported by the City of Los Angeles Economic and Workforce Development Department, CRCDC opened the new Southeast LA BusinessSource Center in 2022. This is a new community space where local business owners and aspiring entrepreneurs can receive access to business resources and utilize business education services.

The Southeast LA BusinessSource Center offers one-on-one assistance to entrepreneurs and small business owners in our ongoing mission to revitalize the economy.

CRCDC SUCCESS STORIES

"We were matched with a microloan lender to support the production of Boketto Cold Brews."



Boketto Cold Brews,
Southeast LA BusinessSource Center client

Southeast LA BusinessSource Center Collabs with Chase

CRCD's newly established Southeast LA BusinessSource Center wasted no time in initiating their efforts to support local business owners and aspiring entrepreneurs in the South LA community. One of our initial steps was to collaborate with Chase branch on Figueroa to provide free business education workshops.

The long-term goal is to equip local businesses with the necessary resources and skills to achieve success and promote economic growth in the community.

"Through our efforts to provide business education resources and tools, local businesses can grow and remain competitive within the City of Los Angeles."



Southeast LA BusinessSource Center headquarters at 2415 S. Central Ave., Los Angeles, CA 90011



Southeast LA BusinessSource Center with Councilman Curren Price, Jr. at Chase honoring legacy South LA businesses during Black History Month.

New neighborhood BusinessSource Center provides business services to South LA

The Southeast LA BusinessSource Center has been successful in providing one-on-one client support to small business owners. Services include consultations for business plan development, legal considerations, and market assessment, free business courses, and workshops, such as fiscal management, e-commerce, advertising, digital marketing, insurance, and more. We also provide an Entrepreneur Training Program where clients can learn how to create a strategic business plan.



CRCD
PARTNERS LLC

Real Estate

Historic 28th Street YMCA

Empowering community reinvestment

Starting in 2007, CRCD initiated partnerships with various organizations to establish affordable and permanent supportive housing equipped with on-site support services for low-income residents, families, transition-age youth, and homeless veterans. We currently own and manage 13 developments that offer 464 units of affordable and permanent supportive housing, and we are in the process of developing 530+ more units. This represents a collective investment of \$160 million in South LA's real estate and housing, with an additional \$665 million invested in pre-development. CRCD also oversees a commercial space for our social enterprise and operates Ruth's Place, a homeless youth drop-in center.

In 2022, CRCD, BRIDGE Housing, and Primestor broke ground at our newest development site in Vermont and Manchester, named Evermont. This new affordable housing development will provide 180 units of housing serving families and seniors, including set asides for transition-age youth with children and unhoused senior citizens.

Changing lives, one home at a time



Evermont development groundbreaking ceremony



View of the Evermont development site at Vermont and Manchester

DEVELOPMENTS IN CONSTRUCTION

All permanent supportive units are furnished



RUTH TEAGUE HOMES

Ruth Teague Homes will provide 52 units of affordable and permanent supportive housing to chronically homeless transition-age youth with children, Veterans, and low-income households, a gym to promote resident health, and a community serving ground-floor commercial space, including affordable childcare services.



MARCELLA GARDENS

Marcella Gardens will provide 60 units of permanent supportive housing to homeless transition-age youth, homeless adults, and homeless military veterans with on-site case management. The development also offers a gym, dance studio, and a ground-floor commercial space with a coffee shop.



VERMONT

CRCD has partnered with BRIDGE Housing and Primestor to develop 180 housing units at Vermont and Manchester in South LA for families and seniors, including 60 senior and and 30 family supportive housing units. The ground-floor commercial space includes 60,000 sq. ft. for major retailers, including Target - and a 15,000 sq. ft. Metro training center.



LA PRENSA LIBRE

La Prensa Libre Apartments will provide 105 units of affordable and permanent supportive housing for families 42 families and 25 units for transition-age youth experiencing homelessness. The ground-floor commercial space will house members of the CRCD Adult Workforce Development team and a cafe for the residents.



5TH AND CENTRAL

The major rehabilitation at 803 E. 5th Street involves the redesign of three adjacent buildings to create 94 units of permanent supportive housing units (48 chronically homeless adults and 46 homeless veterans) with on-site case management service space and ground-floor commercial space.



CRCD Enterprises

CRCD Enterprises crew picking up debris while beautifying the community

Changing lives, one job at a time

CRCD Enterprises is a licensed general contractor with a California State General 'B' Contractor's license that specializes in construction, facilities maintenance, and urban infrastructure services. Along with being fully insured, they offer additional services such as neighborhood beautification and cleanup in South LA. They also provide valuable training, certifications, and job opportunities to those who face significant employment barriers, thus enabling them to gain first-time job experience or transitional work experience.

To ensure that individuals acquire skills that can lead to a career with family-sustaining wages, CRCD Enterprises collaborates with youth and adult workforce development programs and offer job skills training to their participants.



CRCD SUCCESS STORIES

"The Clean LA program set Diontaie up for success!"



Diontaie, Clean LA program participant with CRCD Enterprises.

6,848,605
Square feet of
Graffiti removed

1,274 TONS
Trash cleared from
South LA streets

642,254
Blocks of sidewalks
cleaned and repaired

Multi-Craft Core Curriculum (MC3) Apprenticeship Training & Certification

CRCD and CRCD Enterprises, CRCD's social enterprise, provide a comprehensive menu of training and paid-work experience to prepare South LA residents for high-growth, living-wage careers in the regional building and construction trades.

CRCD is a certified partner of the Los Angeles/Orange Counties Building & Construction Trades Council AFL-CIO and the North American Building Trades Unions to provide the Multi-craft Core Curriculum (MC3) Apprenticeship Readiness Training to South LA residents.

"Through comprehensive training and support, we are charting a course towards a brighter and more prosperous future for our community."



CRCD Multi-Craft Core Curriculum (MC3) Graduation Cohort

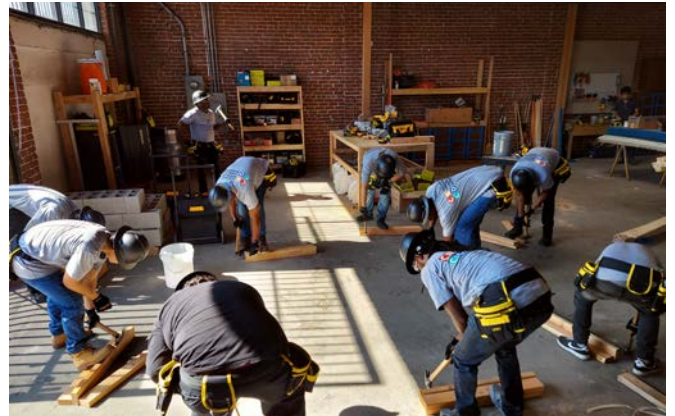


Photo 1: Multi-Craft Core Curriculum participants getting some first-hand experience with construction tools.

Photo 2: Multi-Craft Core Curriculum participants attend info session on local employment prospects within the construction sector.

Get paid to train and started on a path to a new career

MC3 Trainees receive a stipend while in training and are connected with union trades apprenticeship opportunities upon certification.

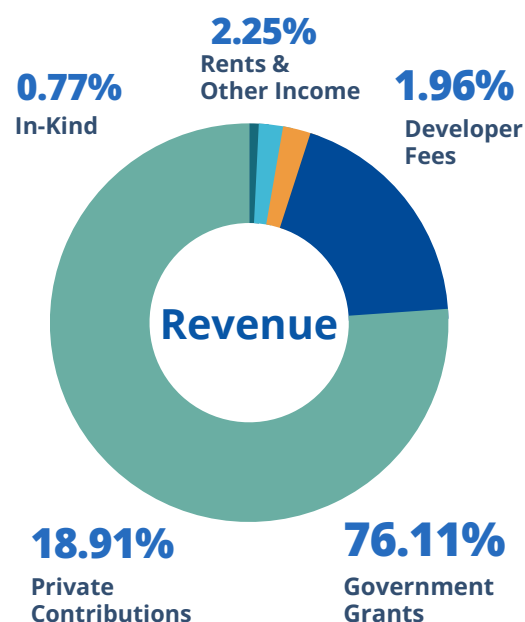
Investment in the expansion of CRCD's current training infrastructure would allow a significant increase in the region's capacity to meet the labor need for projected infrastructure development while prioritizing South LA residents for good, living-wage jobs.

Coalition for Responsible Community Development

2022 Financials*

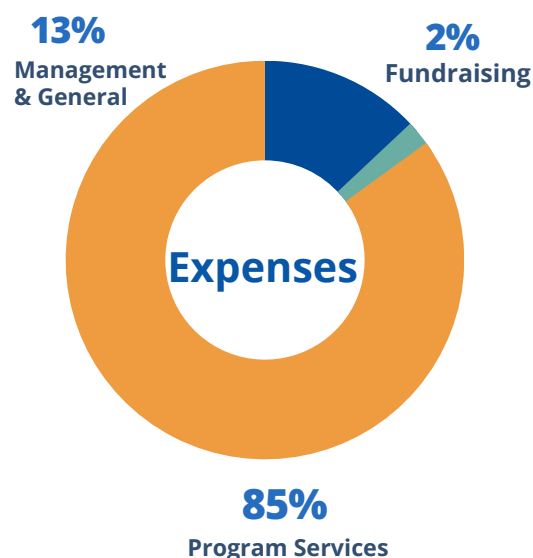
Statement of Activities

Public Support and Other Revenue		Percentage
Government Grants	21,762,170	76.11%
Private Contributions	5,408,347	18.91%
In-Kind	219,775	0.77%
Developer fees	560,101	1.96%
Rents and other income	644,084	2.25%
Total Revenue	\$28,594,477	
Expenses		
Program Services	21,146,776	84.83%
Management & General	3,330,859	13.36%
Fundraising	450,560	1.81%
Total Expenses	\$24,928,195	



Statement of Financial Position

Assets	
Cash & Cash Equivalents	2,998,169
Accounts Receivable	10,020,276
Pledges Receivable	2,306,960
Deposits & Prepaid Expenses	333,271
Property, Plant, & Equipment, Net	3,909,411
Total Assets	\$19,568,087
Liabilities & Net Assets	
Accounts Payable	2,745,710
Accrued Expenses	603,283
Deferred Revenue	551,278
Lines of Credit	2,131,223
Custodial Funds	236,787
Notes Payable, Net	2,253,440
Total Liabilities	\$8,521,721
Net Assets	
Without Donor Restrictions	3,839,480
With Donor Restrictions	7,206,886
Total Net Assets	\$11,046,366
Total Liabilities & Net Assets	\$19,568,087



*Projected Financials

A LIST OF OUR 2022 FUNDERS AND SUPPORTERS

The Coalition for Responsible Community Development's collaborative efforts with external partners and organizations aims to strengthen a foundation that provides opportunities and resources to the South LA community. We appreciate all of the support because we know that we are stronger when we stand united.

- Ahmanson Foundation
- American Hotel and Lodging Association Foundation
- AmeriCorps California Community Foundation
- AmeriCorps Corporation for National and Community Service
- Amity Foundation
- Annenberg Foundation
- AT&T
- Ballmer Group
- Bank of America
- Board of State and Community Corrections
- California Bank & Trust
- California Community Foundation
- California Governor's Office of Business and Economic Development
- California Wellness Foundation
- The California Workforce Development Board
- Capital One
- Carl & Roberta Deutsch Foundation
- Cathay Bank Foundation
- Cedars Sinai
- Century California Fund
- Chan Zuckerberg Initiative
- CIT Bank (First Citizen's Bank)
- Citi Foundation
- City National Bank
- City of LA Department of Public Works - Leonard Green & Partners
- City of Los Angeles
- City of Los Angeles Mayor Karen Bass
- City of Los Angeles Council District 8 - Councilman Marqueece Harris-Dawson
- City of Los Angeles Council District 9 - Councilman Curren D. Price, Jr.
- City of LA Department of Public Works - Office of Community Beautification
- City of LA Economic & Workforce Development
- City of LA Proposition HHH Facilities Program
- City of LA Workforce Development Board
- Community Health Councils
- Conrad N. Hilton Foundation
- Corporation for Supportive Housing
- County of Los Angeles Department of Health Services
- County of Los Angeles Department of Public Health
- County of Los Angeles, Probation Department
- Danhakl Family Foundation
- Durfee Foundation
- Dwight Stuart Youth Fund
- Edison International
- Eli and Edythe Broad Foundation
- Enterprise Community Partners
- First Citizens Bank
- Golden State Opportunity Fund
- Green Fidler & Chaplin LLP
- Held Foundation
- Housing Authority of the City of Los Angeles
- Integrated Recovery Network
- James Irvine Foundation
- Jobs for America's Graduates
- John Burton Advocates for Youth
- JPMorgan Chase Foundation
- Keck Foundation | W.M. Foundation
- Lee Andrews Group
- Los Angeles County Development Authority
- Los Angeles Homeless Services Authority
- Los Angeles Housing + Community Investment Department HHH
- Los Angeles Promise Fund
- Los Angeles Southwest College
- Low-Income Investment Fund
- NALCAB
- National Equity Fund
- National Youth Alliance for Boys & Men of Color
- NeighborWorks
- Nonprofit Finance Fund
- Northrop Grumman
- OneWest Bank
- Opportunity Youth United
- Orange County Community Foundation
- Pacific Western Bank
- Pfaffinger Foundation
- Postmates
- RBC Community Investment Capital Markets
- REDF
- Reyes Coca-Cola Bottling Company
- Roy + Patricia Disney Family Foundation
- San Francisco Foundation
- Shelter Partnership
- Silicon Valley Community Foundation
- Silicon Valley Bank
- South Los Angeles Transit and Empowerment Zone (SLATE-Z)
- Strategic Actions for a Just Economy (SAJE)
- Southern California Gas Company
- Southern California Grantmakers Program
- State of California Workforce Development Board
- Thomas Safran & Associates
- TK Foundation
- U.S. Department of Labor
- United States Small Business Administration
- United Way of Greater Los Angeles
- University of California Los Angeles
- Weingart Foundation
- Wells Fargo Bank
- YouthBuild Charter School of California
- YouthBuild USA

CRCD Program Locations

Administration

CRCD Administration Office

2510 S Central Ave., Los Angeles, CA 90011

Workforce Development

CRCD VCN YouthSource Center

28th Street YMCA

1006 E 28th Street, Los Angeles, CA 90011

CRCD Academy

Los Angeles Trade-Technical College Campus

400 W Washington Blvd., Los Angeles, CA 90015

(Sage Hall H-130)

CRCD Vernon-Central/LATTC WorkSource Center

Los Angeles Trade-Technical College Campus

400 W Washington Blvd., Los Angeles, CA 90015

(Tom Bradley Center for Student Life)

Pueblo Del Rio

Social Hall

1801 E 53rd Street, Los Angeles, CA 90015

Housing and Support Services

Ruth's Place Homeless Youth Drop-in Center

4775 S Broadway, Los Angeles, CA 90037

Sierra Library

4255 S Olive Street, Los Angeles, CA 90037

Real Estate

CRCD Partners, LLC

2332 S Central Ave., Los Angeles, CA 90011

Social Enterprise

CRCD Enterprises

2415 S Central Ave., Los Angeles, CA 90011

3101 S Grand Ave., Los Angeles, CA 90007

Tresa McCoy Regional Training Center

2415 S Central Ave., Los Angeles, CA 90011

Business Services

Southeast Los Angeles BusinessSource Center

2415 S Central Ave., Los Angeles, CA 90011

Family Services

All People's Community Center

822 E 20th Street, Los Angeles, CA 90011

Follow us on social media!
@CRCD_SouthLA



Visit us at
www.coalitionrcd.org

